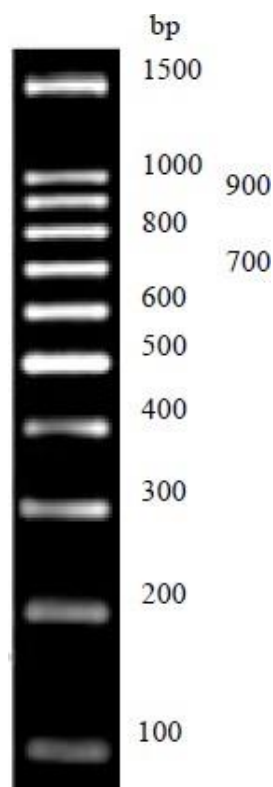


Ver.25061

100bp DNA Ladder

OMD109

Description: The ladder consists of 11 double-stranded DNA bands that are suitable for molecular weight standards for agarose gel electrophoresis. The product is ready-to-use, it is premixed with 1X loading buffer for direct loading. The ladder is composed of eleven individual DNA fragments (in base pairs): 1500, 1000, 900, 800, 700, 600, 500, 400, 300, 200, and 100.



2.0% agarose
5 μ L product
10cm gel length
6V/cm voltage
1X TBE buffer

Concentration

Reference band (500bp): 100ng/5 μ LOther bands: 40ng/5 μ L**Volume:** 250 μ L

Protocol

- 1) Directly load 5 μ L of this product on the agarose gel (load 1 μ L per 1mm gel lane).
- 2) Electrophoresis condition: 2% agarose gel, and 4-10V/cm.
- 3) DNA marker can be visualized using Ethidium bromide under UV light

Recommendations

- 1) Directly use, do not heat before loading.
- 2) Use new agarose gel and change electrophoresis buffer in time, so that it will not affect the electrophoresis results.

Storage: Store at -20°C for 2 years.