

c-Fos Rabbit Polyclonal Antibody

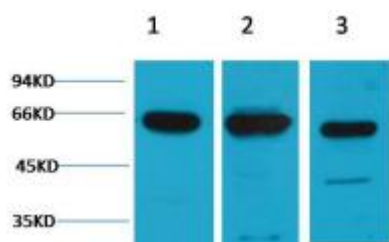
OPR042

Reactivity H, M, R
Host Rabbit
Isotype IgG

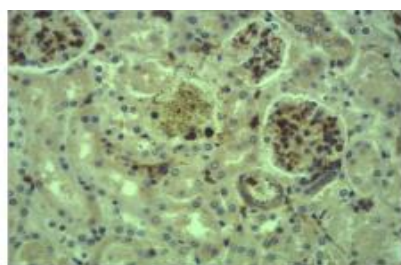
Storage -20°C, Avoid freeze / thaw cycles
Applications WB;IHC
Concentration 1 mg/mL

Note: Centrifuge before opening to ensure complete recovery of vial contents.

Images



Western blot analysis of 1) Hela, 2) Mouse Brain, 3) Rat Brain tissue with diluted at 1:2,000.



Immunohistochemical analysis of paraffin-embedded Mouse Kidney Tissue using c-Fos Rabbit pAb diluted at 1:500.

Immunogen Information

Immunogen Recombinant Protein
Swissprot P01100
Synonyms AP1 antibody, Cellular oncogene c fos antibody, p55 antibody, protooncogene c fos antibody

Product Information

Observed MW 62 kDa
Buffer PBS with 0.02% sodium azide and 50% glycerol pH 7.4.
Dilution WB:1/1000-2000, IHC:1/500-1000

Other applications have not been tested. Optimal dilutions/concentrations should be determined by the end user

Background

c-Fos is a proto-oncogene that is the human homolog of the retroviral oncogene v-fos. c-fos is 380 amino acid protein with a basic leucine zipper region for dimerisation and DNA-binding and a transactivation domain at C terminus.

Research Use

For research use only, not for use in diagnostic procedure

Legend

Applications: WB-Western Blot; IHC-Immunohistochemistry; IF-Immunofluorescence; IP-Immunoprecipitation; FC-Flow cytometry; ChIP-Chromatin Immunoprecipitation

Reactivity: H-Human; R-Rat; M-Mouse; Mk-Monkey; Dg-Dog; Ch-Chicken; Hm-Hamster; Rb-Rabbit; Sh- Sheep; Pg-Pig; Z-Zebrafish; X-Xenopus; C-Cow, Fs- fish.

Please contact Origin Diagnostics and Research for further assistance

www.originlab.in

info@originlab.in

+91-7736237778