

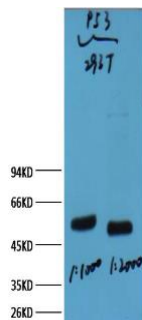
p53 Mouse Monoclonal Antibody

OPM1268

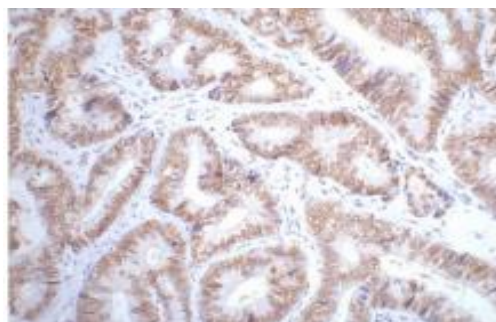
Reactivity	H	Storage	-20 °C, Avoid freeze/ thaw cycles
Host	Mouse	Applications	WB;IHC;IF
Isotype	IgG1	Concentration	1 mg/mL

Note: Centrifuge before opening to ensure complete recovery of vial contents.

Images



Western blot analysis of 293T with p53 mAb diluted at: 1:1000 2):2000



IHC staining of Human colon cancer tissue paraffin-embedded with p53 mouse mAb (6C4) diluted at: 200

Immunogen Information

Immunogen	Synthetic Peptide
Swissprot	P04637
Synonyms	Antigen NY CO3 Cellular tumor antigen p53 FLJ92943 LFS1 Phosphoprotein p53 TP53 TRP53 tumor protein p53 Tumor suppressor p53

Product Information

Observed MW	53 kDa
Buffer	PBS with 0.02% sodium azide and 50% glycerol pH 7.4
Dilution	WB: 1/2000;IHC:1/200,IF:1/100-200

Other applications have not been tested. Optimal dilutions/concentrations should be determined by the end user.

Background

p53 plays a major role in the cellular response to DNA damage and other genomic aberrations. The activation of p53 can lead to either cell cycle arrest and DNA repair or apoptosis. p53 is phosphorylated at multiple sites in vivo and by several different protein kinases in vitro.

Research Use

For research use only, not for use in diagnostic procedure.

Legend

Applications: WB-Western Blot; IHC-Immunohistochemistry; IF-Immunofluorescence; IP-Immunoprecipitation; FC-Flow cytometry;ChIP-Chromatin Immunoprecipitation

Reactivity: H-Human; R-Rat; M-Mouse; Mk-Monkey; Dg-Dog; Ch-Chicken; Hm-Hamster; Rb-Rabbit; Sh- Sheep; Pg-Pig; Z-Zebrafish; X-Xenopus; C-Cow.

Please contact Origin Diagnostics and Research for further assistance

www.originlab.in

info@originlab.in

+91-7736237778