

# RNase Z2 Rabbit Polyclonal Antibody

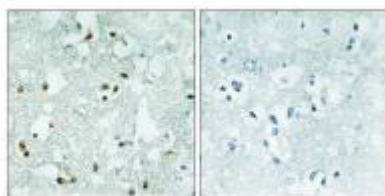
OPR7054

**Reactivity** H,M,R  
**Host** Rabbit  
**Isotype** IgG

**Storage** -20°C, Avoid freeze / thaw cycles  
**Applications** IHC,IF,ELISA  
**Concentration** 1 mg/mL

Note: Centrifuge before opening to ensure complete recovery of vial contents.

## Images



Immunohistochemistry analysis of paraffin-embedded human brain, using ELAC2 Antibody. The picture on the right is blocked with the synthesized peptide.

## Immunogen Information

**Immunogen** The antiserum was produced against synthesized peptide derived from human ELAC2. AA range:161-210  
**Swissprot** Q9BQ52  
**Synonyms** ELAC2; HPC2; Zinc phosphodiesterase ELAC protein 2; ElaC homolog protein 2; Heredity prostate cancer protein 2; Ribonuclease Z 2; RNase Z 2; tRNA 3 endonuclease 2; tRNase Z 2 .

## Product Information

**Buffer** PBS containing 50% glycerol, 0.5% BSA and 0.02% sodium azide.  
**Dilution** IHC: 1/100 - 1/300, ELISA: 1/10000

Other applications have not been tested. Optimal dilutions/concentrations should be determined by the end user

## Background

The protein encoded by this gene has a C-terminal domain with tRNA 3' processing endoribonuclease activity, which catalyzes the removal of the 3' trailer from precursor tRNAs. The protein also interacts with activated Smad family member 2 (Smad2) and its nuclear partner forkhead box H1 (also known as FAST-1), and reduced expression can suppress transforming growth factor-beta induced growth arrest. Mutations in this gene result in an increased risk of prostate cancer. Multiple transcript variants encoding different isoforms have been found for this gene.

## Research Use

For research use only, not for use in diagnostic procedure.

## Legend

Applications: WB-Western Blot; IHC-Immunohistochemistry; IF-Immunofluorescence; IP-Immunoprecipitation; FC-Flow cytometry; ChIP-Chromatin Immunoprecipitation

Reactivity: H-Human; R-Rat; M-Mouse; Mk-Monkey; Dg-Dog; Ch-Chicken; Hm-Hamster; Rb-Rabbit; Sh- Sheep; Pg-Pig; Z-Zebrafish; X-Xenopus; C-Cow.

Please contact Origin Diagnostics and Research for further assistance

[www.originlab.in](http://www.originlab.in)

[info@originlab.in](mailto:info@originlab.in)

+91-7736237778