

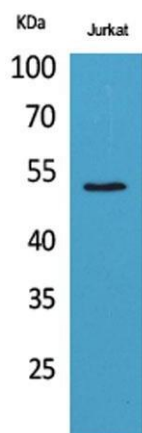
# $\alpha$ Tubulin Rabbit Polyclonal Antibody

OPR4075

<b>Reactivity</b>	H,M,R	<b>Storage</b>	-20°C, Avoid freeze/ thaw cycles
<b>Host</b>	Rabbit	<b>Applications</b>	WB;IHC-p;ELISA
<b>Isotype</b>	IgG	<b>Concentration</b>	1mg/mL

**Note:** Centrifuge before opening to ensure complete recovery of vial contents.

## Images



Western Blot analysis of Jurkat cells using  $\alpha$  Tubulin Polyclonal Antibody. Antibody was diluted at 1:1000. Secondary antibody was diluted at 1:20000

## Immunogen Information

**Immunogen** The antiserum was produced against synthesized peptide derived from human TUBA1A around the non-acetylation site of Lys40. AA range:1-50

**Swissprot** Q71U36

**Synonyms** TUBA1A; TUBA3; Tubulin alpha-1A chain; Alpha-tubulin 3; Tubulin B-alpha-1; Tubulin alpha-3 chain; TUBA1B; Tubulin alpha-1B chain; Alpha-tubulin ubiquitous; Tubulin K-alpha-1; Tubulin alpha-ubiquitous chain; TUBA1C; TUBA6;Tubulin alpha-1C chain; Alpha-tubu

## Product Information

**Observed MW** 50kD

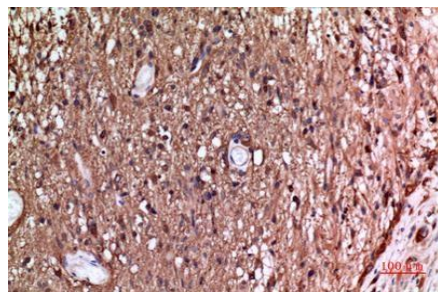
**Buffer** PBS containing 50% glycerol, 0.5% BSA and 0.02% sodium azide

**Dilution** Western Blot: 1/500 -1/2000. IHC-p: 1/100-1/300. ELISA: 1/20000.

Other applications have not been tested. Optimal dilutions/concentrations should be determined by the end user.

## Background

Microtubules of the eukaryotic cytoskeleton perform essential and diverse functions and are composed of a heterodimer of alpha and beta tubulins. The genes encoding these microtubule constituents belong to the tubulin superfamily, which is composed of six distinct families. Genes from the alpha, beta and gamma tubulin families are found in all eukaryotes. The alpha and beta tubulins represent the major components of microtubules, while gamma tubulin plays a critical role in the nucleation of microtubule assembly. There are multiple alpha and beta tubulin genes, which are highly conserved among species. This gene encodes alpha tubulin and is highly similar to the mouse and rat Tuba1 genes. Northern blotting studies have shown that the gene expression is predominantly found in morphologically differentiated neurologic cells. This gene is one of three alpha-tubulin genes in a cluster on chromosome 12q.



Immunohistochemical analysis of paraffin-embedded human-brain, Antibody was diluted at 1:100

## Research Use

For research use only, not for use in diagnostic procedure.

## Legend

Applications: WB-Western Blot; IHC-Immunohistochemistry; IF-Immunofluorescence; IP-Immunoprecipitation; FC-Flow cytometry; ChIP-Chromatin Immunoprecipitation

Reactivity: H-Human; R-Rat; M-Mouse; Mk-Monkey; Dg-Dog; Ch-Chicken; Hm-Hamster; Rb-Rabbit; Sh- Sheep; Pg-Pig; Z-Zebrafish; X-Xenopus; C-Cow.

Please contact Origin Diagnostics and Research for further assistance

[www.originlab.in](http://www.originlab.in)

[info@originlab.in](mailto:info@originlab.in)

+91-7736237778