

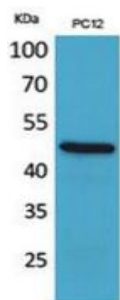
FOXP3 Rabbit Polyclonal Antibody

OPR4176

Reactivity	H,M,R, Pg	Storage	-20 °C, Avoid freeze/ thaw cycles
Host	Rabbit	Applications	WB;IHC;IF;ELISA
Isotype	IgG	Concentration	1 mg/mL

Note: Centrifuge before opening to ensure complete recovery of vial contents.

Images



Western Blot analysis of PC12 cells using FOXP3 Polyclonal Antibody. Secondary antibody was diluted at 1:20000.



Immunohistochemical analysis of paraffin-embedded human-tonsilla, antibody was diluted at 1:100.

Immunogen Information

Immunogen The antiserum was produced against synthesized peptide derived from the C-terminal region of human FOXP3. AA range:381-430

Swissprot Q9BZS1

Synonyms FOXP3; IPEX; JM2; Forkhead box protein P3; Scurfin

Product Information

Observed MW 47 kDa

Buffer PBS containing 50% glycerol, 0.5% BSA and 0.02% sodium azide

Dilution WB:1/500-1/2000;IHC-p:1/100-1/300; ELISA:1/20000.

Other applications have not been tested. Optimal dilutions/concentrations should be determined by the end user.

Background

The protein encoded by this gene is a member of the forkhead/winged-helix family of transcriptional regulators. Defects in this gene are the cause of immunodeficiency polyendocrinopathy, enteropathy, X-linked syndrome (IPEX), also known as X-linked autoimmunity-immunodeficiency syndrome. Alternatively spliced transcript variants encoding different isoforms have been identified.

Research Use

For research use only, not for use in diagnostic procedure.

Legend

Applications: WB-Western Blot; IHC-Immunohistochemistry; IF-Immunofluorescence; IP-Immunoprecipitation; FC-Flow cytometry;ChIP-Chromatin Immunoprecipitation

Reactivity: H-Human; R-Rat; M-Mouse; Mk-Monkey; Dg-Dog; Ch-Chicken; Hm-Hamster; Rb-Rabbit; Sh- Sheep; Pg-Pig; Z-Zebrafish;X-Xenopus; C-Cow.

Please contact Origin Diagnostics and Research for further assistance

www.originlab.in

info@originlab.in

+91-7736237778