

# NFκB-p100 Rabbit Polyclonal Antibody

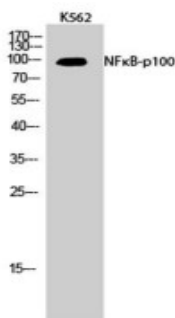
OPR2943

**Reactivity** H,M,R  
**Host** Rabbit  
**Isotype** IgG

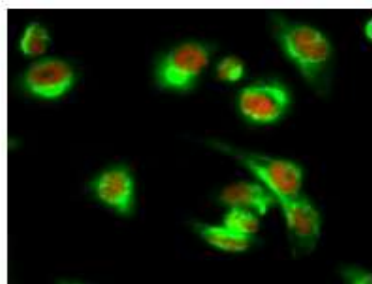
**Storage** -20°C, Avoid freeze / thaw cycles  
**Applications** WB;IHC;IP;IF;ELISA  
**Concentration** 1 mg/mL

Note: Centrifuge before opening to ensure complete recovery of vial contents.

## Images



Western Blot analysis of K562 cells using NFκB-p100 Polyclonal Antibody diluted at 1:1000.



Immunofluorescence analysis of HeLa cell. 1, NFκB-p100 Polyclonal Antibody (red) was diluted at 1:200 (4° overnight). ATG5 mouse Monoclonal Antibody (3C7) (green) was diluted at 1:200 (4° overnight). 2, Goat Anti Rabbit Alexa Fluor 594 was diluted at 1:1000 (room temperature, 50 min). Goat Anti Mouse Alexa Fluor 488 was diluted at 1:1000 (room temperature, 50 min).

## Immunogen Information

**Immunogen** The antiserum was produced against synthesized peptide derived from human NF-kappaB p100/p52. AA range: 833-882  
**Swissprot** Q00653  
**Synonyms** NFKB2; LYT10; Nuclear factor NF-kappa-B p100 subunit; DNA-binding factor KBF2; H2TF1; Lymphocyte translocation chromosome 10 protein; Nuclear factor of kappa light polypeptide gene enhancer in B-cells 2; Oncogene Lys-10; Lys10.

## Product Information

**Buffer** PBS containing 50% glycerol, 0.5% BSA and 0.02% sodium azide  
**Dilution** WB: 1/500 - 1/2000, IHC: 1/100 - 1/300, IP: 2-5 ug/mg lysate, IF: 1/200 - 1/1000, ELISA: 1/20000.

Other applications have not been tested. Optimal dilutions/concentrations should be determined by the end user

## Background

This gene encodes a subunit of the transcription factor complex nuclear factor-kappa-B (NFκB). The NFκB complex is expressed in numerous cell types and functions as a central activator of genes involved in inflammation and immune function. The protein encoded by this gene can function as both a transcriptional activator or repressor depending on its dimerization partner. The p100 full-length protein is co-translationally processed into a p52 active form. Chromosomal rearrangements and translocations of this locus have been observed in B cell lymphomas, some of which may result in the formation of fusion proteins. There is a pseudogene for this gene on chromosome 18. Alternative splicing results in multiple transcript variants.

## Research Use

For research use only, not for use in diagnostic procedure

## Legend

Applications: WB-Western Blot; IHC-Immunohistochemistry; IF-Immunofluorescence; IP-Immunoprecipitation; FC-Flow cytometry; ChIP-Chromatin Immunoprecipitation

Reactivity: H-Human; R-Rat; M-Mouse; Mk-Monkey; Dg-Dog; Ch-Chicken; Hm-Hamster; Rb-Rabbit; Sh-Sheep; Pg-Pig; Z-Zebrafish; X-Xenopus; C-Cow, Fs-fish.

Please contact Origin Diagnostics and Research for further assistance

[www.originlab.in](http://www.originlab.in)

[info@originlab.in](mailto:info@originlab.in)

+91-7736237778