

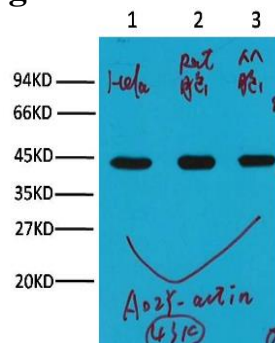
# β-actin Mouse Monoclonal Antibody

OPM1031

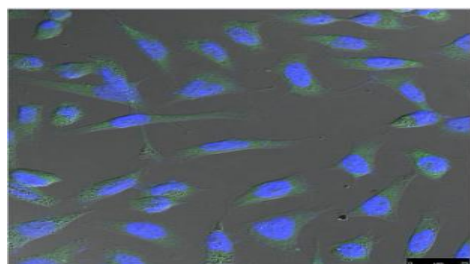
<b>Reactivity</b>	H,M,R,Mk,Ch,Dg,Hm,Rb,Sh,pg	<b>Storage</b>	-20 °C, Avoid freeze/ thaw cycles
<b>Host</b>	Mouse	<b>Applications</b>	WB;IHC;IF
<b>Isotype</b>	IgG1	<b>Concentration</b>	1 mg/mL

Note: Centrifuge before opening to ensure complete recovery of vial contents.

## Images



Western blot analysis of Hela (1) Rat brain (2) Mouse brain (3) with β-actin mouse mAb diluted at: 10000.



IF analysis of Hela with β-actin mouse mAb diluted at: 500.

## Immunogen Information

<b>Immunogen</b>	Synthetic Peptide
<b>Swissprot</b>	P60709
<b>Synonyms</b>	actin antibody, b-actin antibody, beta-actin antibody

## Product Information

<b>Observed MW</b>	43 kDa
<b>Buffer</b>	PBS with 0.02% sodium azide and 50% glycerol pH 7.4
<b>Dilution</b>	WB: 1/5000-10000; IHC: 1/200; IF: 1/200

Other applications have not been tested. Optimal dilutions/concentrations should be determined by the end user.

## Background

β-actin is one of six different actin isoforms that have been identified. The actin molecules found in cells of various species and tissues tend to be very similar in their immunological and physical properties. Therefore, antibodies against β-actin are useful as loading controls for Western Blotting. However it should be noted that levels of β-actin may not be stable in certain cells. For example, expression of β-actin in adipose tissue is very low and therefore β-actin should not be used as loading control for these tissues.

## Research Use

For research use only, not for use in diagnostic procedure.

## Legend

Applications: WB-Western Blot; IHC-Immunohistochemistry; IF-Immunofluorescence; IP-Immunoprecipitation; FC-Flow cytometry; ChIP-Chromatin Immunoprecipitation

Reactivity: H-Human; R-Rat; M-Mouse; Mk-Monkey; Dg-Dog; Ch-Chicken; Hm-Hamster; Rb-Rabbit; Sh- Sheep; Pg-Pig; Z-Zebrafish; X-Xenopus; C-Cow.

Please contact Origin Diagnostics and Research for further assistance

[www.originlab.in](http://www.originlab.in)

[info@originlab.in](mailto:info@originlab.in)

+91-7736237778