

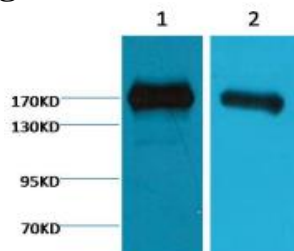
EGFR Mouse Monoclonal Antibody

OPM1134

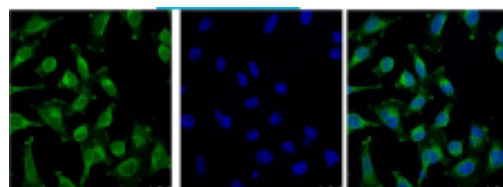
Reactivity	H	Storage	-20°C, Avoid freeze/ thaw cycles
Host	Mouse	Applications	WB;IHC;IF;IP
Isotype	IgG1	Concentration	1 mg/mL

Note: Centrifuge before opening to ensure complete recovery of vial contents.

Images



Western blot analysis of A431 2) Hela with OPM1134 diluted at: 2000



IF analysis of Hela with OPM1134 (Left) and DAPI (Right) diluted at: 100.

Immunogen Information

Immunogen	Synthetic Peptide
Swissprot	P00533
Synonyms	Epidermal Growth Factor Receptor ;ErbB-1; ErbB1; ER1; ERB-B1; MENA; HER1; Erythroblastic Leukemia Viral(v-Erb-B)oncogene HomologAvian; Proto-oncogene c-ErbB-1; Receptor tyrosine-protein kinase erbB-1

Product Information

Observed MW	170 kDa
Buffer	PBS with 0.02% sodium azide and 50% glycerol pH 7.4
Dilution	WB:1/1000-3000;IP:1/200;IF :1/100-200

Other applications have not been tested. Optimal dilutions/concentrations should be determined by the end user.

Background

The epidermal growth factor receptor (EGFR; ErbB-1; HER1 in humans) is the cell-surface receptor for members of the epidermal growth factor family (EGF-family) of extracellular protein ligands. Known ligands include EGFTGFA/TGF-alpha amphiregulin epigen/EPGN BTC/betacellulin epiregulin/EREG and HBEGF/heparin-binding EGF. Ligand binding triggers receptor homo- and/or heterodimerization and autophosphorylation on key cytoplasmic residues. The phosphorylated receptor recruits adapter proteins like GRB2 which in turn activates complex downstream signaling cascades.

Research Use

For research use only, not for use in diagnostic procedure.

Legend

Applications: WB-Western Blot; IHC-Immunohistochemistry; IF-Immunofluorescence; IP-Immunoprecipitation; FC-Flow cytometry;ChIP-Chromatin Immunoprecipitation

Reactivity: H-Human; R-Rat; M-Mouse; Mk-Monkey; Dg-Dog; Ch-Chicken; Hm-Hamster; Rb-Rabbit; Sh- Sheep; Pg-Pig; Z-Zebrafish; X-Xenopus; C-Cow.

Please contact Origin Diagnostics and Research for further assistance

www.originlab.in

info@originlab.in

+91-7736237778