

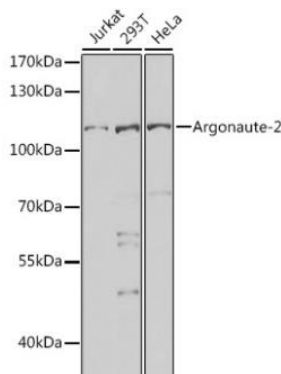
Argonaute-2 Rabbit Polyclonal Antibody

OPR68395

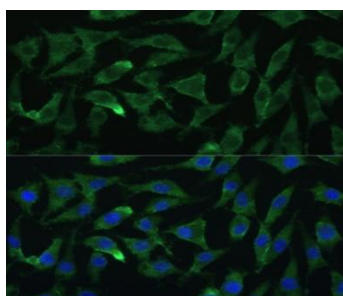
Reactivity	H,M	Storage	-20°C, Avoid freeze / thaw cycles
Host	Rabbit	Applications	IF, WB
Isotype	IgG	Concentration	1 mg/mL

Note: Centrifuge before opening to ensure complete recovery of vial contents.

Images



Western blot analysis of extracts of various cell lines using Argonaute-2 Polyclonal Antibody at 1:1000 dilution.



Immunofluorescence analysis of L929 cells using Argonaute-2 Polyclonal Antibody at dilution of 1:100 (40 x lens). Blue: DAPI for nuclear staining.

Immunogen Information

Immunogen	Recombinant fusion protein of human Argonaute-2
Swissprot	Q9UKV8
Synonyms	AGO2, Argonaute 2, CASC7, EIF2C2, EIF2C2 LINC00980, PPD, Q10, protein argonaute-2

Product Information

Observed MW	110 kDa
Buffer	PBS with 0.02% sodium azide, 50% glycerol, pH 7.3
Dilution	WB : 1:500-1:2000, IF : 1:50-1:100.

Other applications have not been tested. Optimal dilutions/concentrations should be determined by the end user

Background

This gene encodes a member of the Argonaute family of proteins which play a role in RNA interference. The encoded protein is highly basic, and contains a PAZ domain and a PIWI domain. It may interact with dicer1 and play a role in short interfering-RNA-mediated gene silencing. Multiple transcript variants encoding different isoforms have been found for this gene.

Research Use

For research use only, not for use in diagnostic procedure

Legend

Applications: WB-Western Blot; IHC-Immunohistochemistry; IF-Immunofluorescence; IP-Immunoprecipitation; FC-Flow cytometry; ChIP-Chromatin Immunoprecipitation

Reactivity: H-Human; R-Rat; M-Mouse; Mk-Monkey; Dg-Dog; Ch-Chicken; Hm-Hamster; Rb-Rabbit; Sh- Sheep; Pg-Pig; Z-Zebrafish; X-Xenopus; C-Cow, Fs- Fish.

Please contact Origin Diagnostics and Research for further assistance

www.originlab.in

info@originlab.in

+91-7736237778