

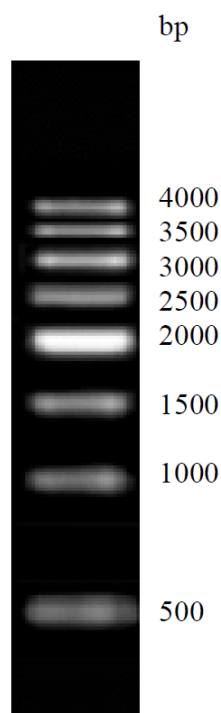
Ver.23081

500bp DNA Ladder

OMD112

Description: 500bp DNA ladder is ready-to-use molecular weight standards for agarose gel electrophoresis analysis. Product is ready-to-use; it is premixed with 1X Loading Buffer for direct loading.

The ladder is composed of eight individual DNA fragments (in base pairs): 4000, 3500, 3000, 2500, 2000, 1500, 1000 and 500. It contains one intense band (2000bp) for easy orientation. Loading of 6 μ L of the product will provide 50ng per DNA fragment with one intense fragment of 100ng.



1.0% agarose
6 μ L product
10cm gel length
0.5X TBE buffer
6V/cm voltage

Concentration:

Reference band (2000bp): 100ng/6 μ LOther bands: 50ng/6 μ L**Volume:** 300 μ L

Protocol

- 1) Directly load 6 μ L of this product on the agarose gel (load 1 μ L per 1mm gel lane).
- 2) Electrophoresis condition: 0.7-1.5% agarose gel, 4-10V/cm voltage.
- 3) DNA ladder can be visualized using Ethidium bromide under UV light

Recommendations

- 1) Directly use, do not heat before loading.
- 2) Please use new agarose gel and change electrophoresis buffer in time, so as not to affect the electrophoresis results.

Storage: Store at -20°C for 1 year.