

# CD73 Rabbit Polyclonal Antibody

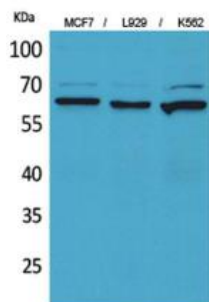
OPR3984

**Reactivity** H,M,R  
**Host** Rabbit  
**Isotype** IgG

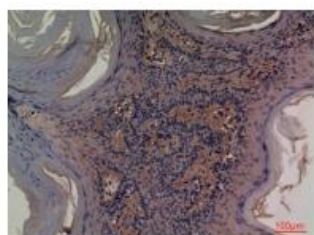
**Storage** -20°C, Avoid freeze / thaw cycles  
**Applications** WB;IHC,IF,ELISA  
**Concentration** 1 mg/mL

Note: Centrifuge before opening to ensure complete recovery of vial contents.

## Images



Western Blot analysis of MCF7, L929, K562 cells using CD73 Polyclonal Antibody. Secondary antibody was diluted at 1:20000.



Immunohistochemical analysis of paraffin-embedded human-skin, antibody was diluted at 1:100.

## Immunogen Information

**Immunogen** The antiserum was produced against synthesized peptide derived from the Internal region of human NT5E. AA range:431-480  
**Swissprot** P21589  
**Synonyms** NT5E; NT5; NTE; 5'-nucleotidase; 5'-NT; Ecto-5'-nucleotidase; CD73

## Product Information

**Observed MW** 68 kDa  
**Buffer** PBS containing 50% glycerol, 0.5% BSA and 0.02% sodium azide.  
**Dilution** WB: 1/500 - 1/2000, IHC-p: 1:100-300, ELISA: 1/20000.

Other applications have not been tested. Optimal dilutions/concentrations should be determined by the end user

## Background

The protein encoded by this gene is a plasma membrane protein that catalyzes the conversion of extracellular nucleotides to membrane-permeable nucleosides. The encoded protein is used as a determinant of lymphocyte differentiation. Defects in this gene can lead to the calcification of joints and arteries. Two transcript variants encoding different isoforms have been found for this gene.

## Research Use

For research use only, not for use in diagnostic procedure.

## Legend

Applications: WB-Western Blot; IHC-Immunohistochemistry; IF-Immunofluorescence; IP-Immunoprecipitation; FC-Flow cytometry; ChIP-Chromatin Immunoprecipitation

Reactivity: H-Human; R-Rat; M-Mouse; Mk-Monkey; Dg-Dog; Ch-Chicken; Hm-Hamster; Rb-Rabbit; Sh- Sheep; Pg-Pig; Z-Zebrafish; X-Xenopus; C-Cow.

Please contact Origin Diagnostics and Research for further assistance

[www.originlab.in](http://www.originlab.in)

[info@originlab.in](mailto:info@originlab.in)

+91-7736237778