

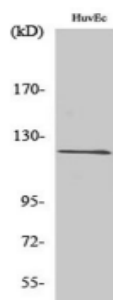
FIR Rabbit Polyclonal Antibody

OPR2346

Reactivity	H,M	Storage	-20 °C, Avoid freeze/ thaw cycles
Host	Rabbit	Applications	WB;IF;ELISA
Isotype	IgG	Concentration	1 mg/mL

Note: Centrifuge before opening to ensure complete recovery of vial contents.

Images



Western Blot analysis of various cells using FIR Polyclonal Antibody.

Immunogen Information

Immunogen	The antiserum was produced against synthesized peptide derived from human FIR. AA range:331-380
Swissprot	O94887
Synonyms	FARP2; KIAA0793; PLEKHC3; FERM; RhoGEF and pleckstrin domain-containing protein 2; FERM domain including RhoGEF; FIR; Pleckstrin homology domain-containing family C member 3; PH domain-containing family C member 3

Product Information

Observed MW	119 kDa
Buffer	PBS containing 50% glycerol, 0.5% BSA and 0.02% sodium azide
Dilution	WB:1/500-1/2000.;IHC:1/100-1/300;ELISA: 1/5000

Other applications have not been tested. Optimal dilutions/concentrations should be determined by the end user.

Background

function: Rho-guanine nucleotide exchange factor that activates RAC1. Plays a role in the response to class 3 semaphorins and remodeling of the actin cytoskeleton; similarity: Contains 1 DH (DBL-homology) domain; similarity: Contains 1 FERM domain., similarity: Contains 2 PH domains., subunit: Interacts with PLXNA1. Interaction with PLXNA1 or PIP5K1C lowers its guanine nucleotide exchange activity. Dissociates from PLXNA1 when SEMA3A binds to the receptor. Interacts with PIP5K1C via its FERM domain. The interaction with PIP5K1C is enhanced by SEMA3A binding.

Research Use

For research use only, not for use in diagnostic procedure.

Legend

Applications: WB-Western Blot; IHC-Immunohistochemistry; IF-Immunofluorescence; IP-Immunoprecipitation; FC-Flow cytometry;ChIP-Chromatin Immunoprecipitation

Reactivity: H-Human; R-Rat; M-Mouse; Mk-Monkey; Dg-Dog; Ch-Chicken; Hm-Hamster; Rb-Rabbit; Sh- Sheep; Pg-Pig; Z-Zebrafish;X-Xenopus; C-Cow.

Please contact Origin Diagnostics and Research for further assistance

www.originlab.in

info@originlab.in

+91-7736237778