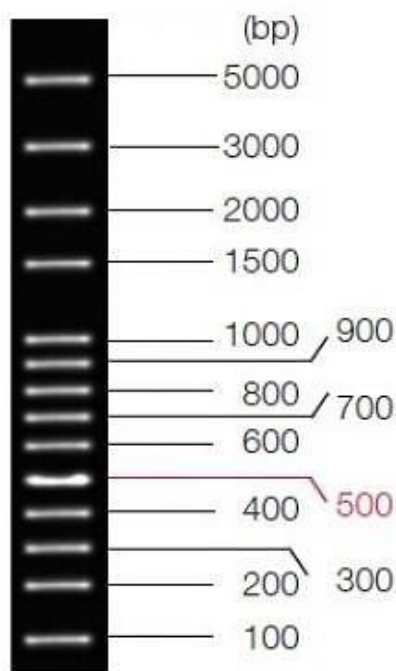


Ver.23111

100bp Plus DNA Ladder

OMD107

Description: The product is ready-to-use; it is premixed with 1X loading buffer for direct loading, 5 μ L on agarose gel electrophoresis. The ladder composed of 14 individual DNA fragments (in base pairs): 5000, 3000, 2000, 1500, 1000, 900, 800, 700, 600, 500, 400, 300, 200 and 100, and are supplied at approximately 40-50ng/5 μ L. The 500bp is 100ng/5 μ L as a reference band.



2.0% agarose
5 μ L product

Volume: 250 μ L

Protocol

- 1) Directly load 5 μ L of this product on the agarose gel (load 1 μ L per 1mm gel lane).
- 2) Electrophoresis condition: 2-3% agarose gel, 4-10 V/cm voltage.
- 3) DNA marker can be visualized using Ethidium bromide under UV light

Recommendations

- 1) Directly use, do not heat before loading.
- 2) Please use new agarose gel and change electrophoresis buffer in time, so as not to affect the electrophoresis results.

Storage: Store at -20°C for 1 year.