

# Akt(phospho Ser124)Rabbit Polyclonal Antibody

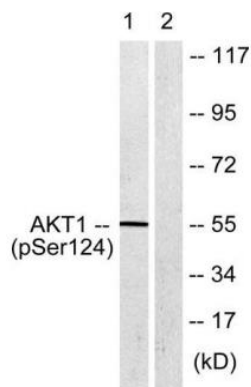
OPR5159

**Reactivity** H,M,R  
**Host** Rabbit  
**Isotype** IgG

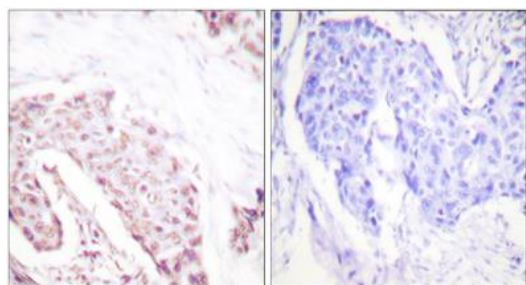
**Storage** -20 °C, Avoid freeze/ thaw cycles  
**Applications** WB;IHC;IF;ELISA  
**Concentration** 1 mg/mL

Note: Centrifuge before opening to ensure complete recovery of vial contents.

## Images



Western blot analysis of lysates from mouse brain, using Akt (Phospho-Ser124) Antibody. The lane on the right is blocked with the phospho peptide.



Immunohistochemistry analysis of paraffin-embedded human breast carcinoma, using Akt (Phospho-Ser124) Antibody. The picture on the right is blocked with the phospho peptide.

## Immunogen Information

**Immunogen** The antiserum was produced against synthesized peptide derived from human Akt around the phosphorylation site of Ser124.

AA range:90-139

**Swissprot**

P31749

**Synonyms**

AKT1; PKB; RAC; RAC-alpha serine/threonine-protein kinase; Protein kinase B; PKB; Protein kinase B alpha; PKB alpha; Proto-oncogene c-Akt; RAC-PK-alpha

## Product Information

**Observed MW** 56 kDa

**Buffer** PBS containing 50% glycerol, 0.5% BSA and 0.02% sodium azide

**Dilution** WB: 1/500:1/2000, IHC: 1/100:1/300, ELISA: 1/5000.

Other applications have not been tested. Optimal dilutions/concentrations should be determined by the end user.

## Background

The serine-threonine protein kinase encoded by the AKT1 gene is catalytically inactive in serum-starved primary and immortalized fibroblasts. AKT1 and the related AKT2 are activated by platelet-derived growth factor. The activation is rapid and specific, and it is abrogated by mutations in the pleckstrin homology domain of AKT1. It was shown that the activation occurs through phosphatidylinositol 3-kinase. In the developing nervous system AKT is a critical mediator of growth factor-induced neuronal survival. Survival factors can suppress apoptosis in a transcription-independent manner by activating the serine/threonine kinase AKT1, which then phosphorylates and inactivates components of the apoptotic machinery. Mutations in this gene have been associated with the Proteus syndrome. Multiple alternatively spliced transcript variants have been found for this gene.

## Research Use

For research use only, not for use in diagnostic procedure.

## Legend

Applications: WB-Western Blot; IHC-Immunohistochemistry; IF-Immunofluorescence; IP-Immunoprecipitation; FC-Flow cytometry;ChIP-Chromatin Immunoprecipitation

Reactivity: H-Human; R-Rat; M-Mouse; Mk-Monkey; Dg-Dog; Ch-Chicken; Hm-Hamster; Rb-Rabbit; Sh- Sheep; Pg-Pig; Z-Zebrafish;X-Xenopus; C-Cow.

Please contact Origin Diagnostics and Research for further assistance

[www.originlab.in](http://www.originlab.in)

[info@originlab.in](mailto:info@originlab.in)

+91-7736237778