

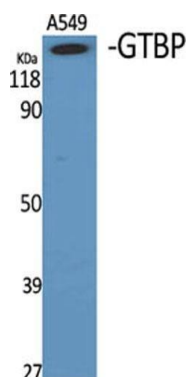
# GTBP Rabbit Polyclonal Antibody

OPR2489

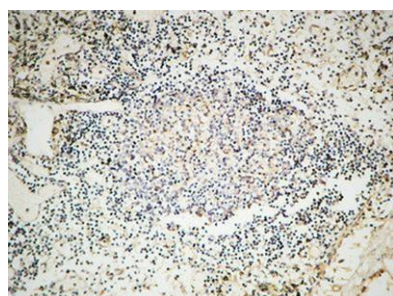
<b>Reactivity</b>	H, M, Mk	<b>Storage</b>	-20°C, Avoid freeze / thaw cycles
<b>Host</b>	Rabbit	<b>Applications</b>	WB; IHC; IF; ELISA
<b>Isotype</b>	IgG	<b>Concentration</b>	1 mg/mL

**Note:** Centrifuge before opening to ensure complete recovery of vial contents.

## Images



Western Blot analysis of various cells using GTBP Polyclonal Antibody diluted at 1:1000 cells nucleus extracted by Minute TM Cytoplasmic and Nuclear Fractionation kit.



Immunohistochemical analysis of paraffin-embedded Human Lymph gland. 1, Antibody was diluted at 1:100 (4°C overnight). 2, High-pressure and temperature EDTA, pH8.0 was used for antigen retrieval. 3, Secondary antibody was diluted at 1:200 (room temperature, 30 minutes)

## Immunogen Information

<b>Immunogen</b>	The antiserum was produced against synthesized peptide derived from human MSH6. AA range: 341-390.
<b>Swissprot</b>	P52701
<b>Synonyms</b>	MSH6; GTBP; DNA mismatch repair protein Msh6; hMSH6; G/T mismatch-binding protein; GTBP;

## Product Information

<b>Observed MW</b>	170kD
<b>Buffer</b>	PBS containing 50% glycerol, 0.5%BSA and 0.02% sodium azide.
<b>Dilution</b>	WB:-1/500-1/2000, IHC:- 1/100 – 1/300, ELISA:- 1/20000, IF:- 1/200 -1/1000

Other applications have not been tested. Optimal dilutions/concentrations should be determined by the end user

## Background

This gene encodes a member of the DNA mismatch repair MutS family. In E. coli, the MutS protein helps in the recognition of mismatched nucleotides prior to their repair. A highly conserved region of approximately 150 aa, called the Walker-A adenine nucleotide binding motif, exists in MutS homologs. The encoded protein heterodimerizes with MSH2 to form a mismatch recognition complex that functions as a bidirectional molecular switch that exchanges ADP and ATP as DNA mismatches are bound and dissociated. Mutations in this gene may be associated with hereditary nonpolyposis colon cancer, colorectal cancer, and endometrial cancer.

## Research Use

For research use only, not for use in diagnostic procedure

## Legend

Applications: WB-Western Blot; IHC-Immunohistochemistry; IF-Immunofluorescence; IP-Immunoprecipitation; FC-Flow cytometry; ChIP-Chromatin Immunoprecipitation

Reactivity: H-Human; R-Rat; M-Mouse; Mk-Monkey; Dg-Dog; Ch-Chicken; Hm-Hamster; Rb-Rabbit; Sh- Sheep; Pg-Pig; Z- Zebrafish; X-Xenopus; C-Cow,Is-Insect,Ys- yeast.

Please contact Origin Diagnostics and Research for further assistance

[www.originlab.in](http://www.originlab.in)

[info@originlab.in](mailto:info@originlab.in)

+91-7736237778