

Actin Rabbit Polyclonal Antibody

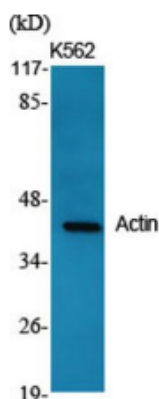
OPR1589

Reactivity H, M, R, Fs
Host Rabbit
Isotype IgG

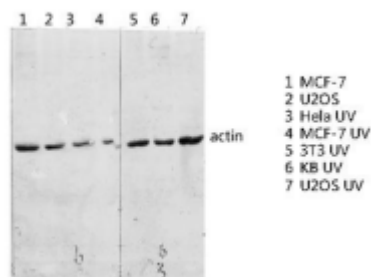
Storage -20°C, Avoid freeze / thaw cycles
Applications WB;IHC;IF;ELISA
Concentration 1 mg/mL

Note: Centrifuge before opening to ensure complete recovery of vial contents.

Images



Western Blot analysis of various cells using Actin Polyclonal Antibody diluted at 1:2000.



Western blot analysis of various lysis using Actin Polyclonal Antibody diluted at 1:2000. Secondary antibody was diluted at 1:20000.

Immunogen Information

Immunogen The antiserum was produced against synthesized peptide derived from human Actin.
AA range:326-375
Swissprot P60709/Q9BYX7/P63261
Synonyms ACTB; Actin; cytoplasmic 1; Beta-actin; POTEKP; ACTBL3; FKSG30; Putative beta-actin-like protein 3; Kappa-actin; POTE ankyrin domain family member K; ACTG1; ACTB; ACTG; Actin, cytoplasmic 2; Gamma-actin.

Product Information

Observed MW 45 kDa
Buffer PBS containing 50% glycerol, 0.5% BSA and 0.02% sodium azide
Dilution WB: 1/500 - 1/2000, IHC: 1/100 - 1/300, ELISA: 1/10000.

Other applications have not been tested. Optimal dilutions/concentrations should be determined by the end user

Background

This gene encodes one of six different actin proteins. Actins are highly conserved proteins that are involved in cell motility, structure, and integrity. This actin is a major constituent of the contractile apparatus and one of the two nonmuscle cytoskeletal actins.

Research Use

For research use only, not for use in diagnostic procedure

Legend

Applications: WB-Western Blot; IHC-Immunohistochemistry; IF-Immunofluorescence; IP-Immunoprecipitation; FC-Flow cytometry; ChIP-Chromatin Immunoprecipitation

Reactivity: H-Human; R-Rat; M-Mouse; Mk-Monkey; Dg-Dog; Ch-Chicken; Hm-Hamster; Rb-Rabbit; Sh- Sheep; Pg-Pig; Z-Zebrafish; X-Xenopus; C-Cow, Fs- fish.

Please contact Origin Diagnostics and Research for further assistance

www.originlab.in

info@originlab.in

+91-7736237778