

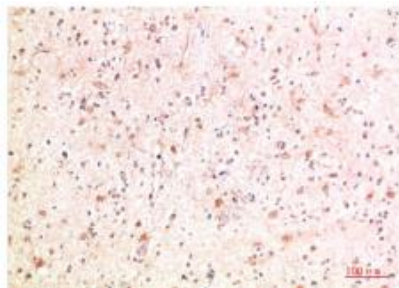
PI3 Kinase P85 Rabbit Polyclonal Antibody

OPR319

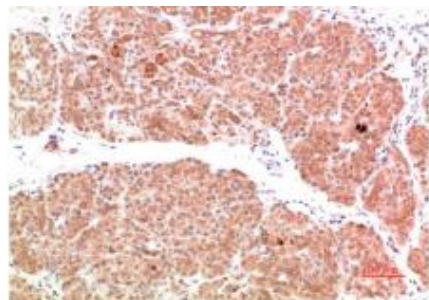
Reactivity	H,M,R	Storage	-20°C, Avoid freeze / thaw cycles
Host	Rabbit	Applications	IHC
Isotype	IgG	Concentration	1 mg/mL

Note: Centrifuge before opening to ensure complete recovery of vial contents.

Images



Immunohistochemical analysis of paraffin-embedded Human Brain Tissue using PI3 Kinase P85 Rabbit pAb diluted at 1:500.



Immunohistochemical analysis of paraffin-embedded Human Pancreas Carcinoma Tissue using PI3 Kinase P85 Rabbit pAb diluted at 1:500.

Immunogen Information

Immunogen	Recombinant Protein
Swissprot	P27986
Synonyms	GRB1 antibody, p85 alpha antibody, PI3K antibody, PIK3R1 antibody

Product Information

Buffer	PBS with 0.02% sodium azide and 50% glycerol pH 7.4.
Dilution	IHC :1/200-500

Other applications have not been tested. Optimal dilutions/concentrations should be determined by the end user

Background

Phosphatidylinositol-4,5-bisphosphate 3-kinase (also called phosphatidylinositide 3-kinases, phosphatidylinositol-3-kinases, PI 3- kinases, PI(3)Ks, PI-3Ks or by the HUGO official stem symbol for the gene family, PI3K(s)) are a family of enzymes involved in cellular functions such as cell growth, proliferation, differentiation, motility, survival and intracellular trafficking, which in turn are involved in cancer .

Research Use

For research use only, not for use in diagnostic procedure

Legend

Applications: WB-Western Blot; IHC-Immunohistochemistry; IF-Immunofluorescence; IP-Immunoprecipitation; FC-Flow cytometry; ChIP-Chromatin Immunoprecipitation

Reactivity: H-Human; R-Rat; M-Mouse; Mk-Monkey; Dg-Dog; Ch-Chicken; Hm-Hamster; Rb-Rabbit; Sh- Sheep; Pg-Pig; Z-Zebrafish; X-Xenopus; C-Cow.

Please contact Origin Diagnostics and Research for further assistance

www.originlab.in

info@originlab.in

+91-7736237778