

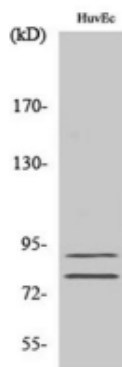
TGase2 Rabbit Polyclonal Antibody

OPR3592

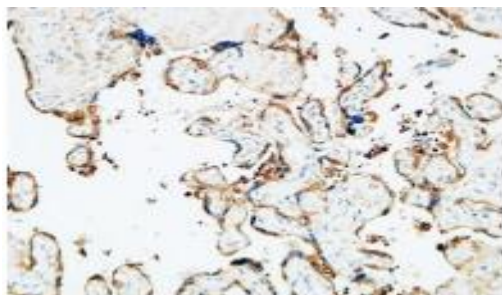
Reactivity	H,M	Storage	-20 °C, Avoid freeze/ thaw cycles
Host	Rabbit	Applications	WB;IHC;IF;ELISA
Isotype	IgG	Concentration	1 mg/mL

Note: Centrifuge before opening to ensure complete recovery of vial contents.

Images



Western Blot analysis of various cells using TGase2 Polyclonal Antibody



Immunohistochemical analysis of paraffin-embedded Human placenta. 1, Antibody was diluted at 1:200(4° overnight). 2, High-pressure and temperature EDTA, pH 8.0 was used for antigen retrieval. 3,Secondary antibody was diluted at 1:200(room temperature, 30 minutes)

Immunogen Information

Immunogen	The antiserum was produced against synthesized peptide derived from human Transglutaminase 2. AA range:1-50
Swissprot	P21980
Synonyms	TGM2;Protein-glutamine gamma glutamyltransferase 2; Tissue transglutaminase; Transglutaminase C; TG(C); TGC; TGase C; Transglutaminase H; TGase H; Transglutaminase-2; TGase-2

Product Information

Observed MW	90 kDa
Buffer	PBS containing 50% glycerol, 0.5% BSA and 0.02% sodium azide
Dilution	WB: 1/500 - 1/2000;IHC: 1/100 - 1/300; ELISA: 1/20000.

Other applications have not been tested. Optimal dilutions/concentrations should be determined by the end user.

Background

Transglutaminases are enzymes that catalyze the crosslinking of proteins by epsilon-gamma glutamyl lysine isopeptide bonds. While the primary structure of transglutaminases is not conserved, they all have the same amino acid sequence at their active sites and their activity is calcium-dependent. The protein encoded by this gene acts as a monomer, is induced by retinoic acid, and appears to be involved in apoptosis. Finally, the encoded protein is the autoantigen implicated in celiac disease. Two transcript variants encoding different isoforms have been found for this gene.

Research Use

For research use only, not for use in diagnostic procedure.

Legend

Applications: WB-Western Blot; IHC-Immunohistochemistry; IF-Immunofluorescence; IP-Immunoprecipitation; FC-Flow cytometry;ChIP-Chromatin Immunoprecipitation

Reactivity: H-Human; R-Rat; M-Mouse; Mk-Monkey; Dg-Dog; Ch-Chicken; Hm-Hamster; Rb-Rabbit; Sh- Sheep; Pg-Pig; Z-Zebrafish;X-Xenopus; C-Cow.

Please contact Origin Diagnostics and Research for further assistance

www.originlab.in

info@originlab.in

+91-7736237778