

IRS-1 (phospho Ser307) Rabbit Polyclonal Antibody

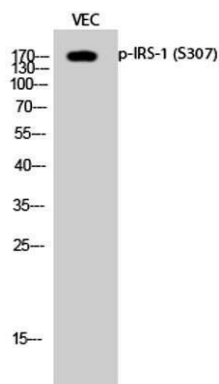
OPR1341

Reactivity H, M, R
Host Rabbit
Isotype IgG

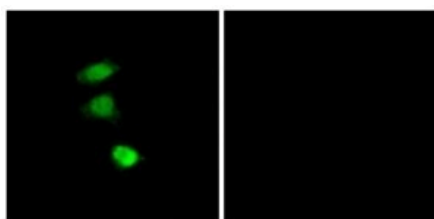
Storage -20°C, Avoid freeze / thaw cycles
Applications WB; IHC; IF; ELISA
Concentration 1 mg/mL

Note: Centrifuge before opening to ensure complete recovery of vial contents.

Images



Western Blot analysis of VEC cells using Phospho-IRS-1 (phospho Ser307) Polyclonal Antibody diluted at 1:1000.



Immunofluorescence analysis of COS7 cells, using IRS-1 (Phospho-Ser307) Polyclonal Antibody. The picture on the right is blocked with the phospho peptide.

Immunogen Information

Immunogen The antiserum was produced against synthesized peptide derived from human IRS-1 around the phosphorylation site of Ser307.

AA range: 274-323

Swissprot P35568

Synonyms IRS1; Insulin receptor substrate 1; IRS-1.

Product Information

Observed MW 170kD

Buffer PBS containing 50% glycerol, 0.5% BSA and 0.02% sodium azide.

Dilution WB: 1/500 - 1/2000, IHC: 1/100 - 1/300, IF: 1/200 - 1/1000, ELISA: 1/10000

Other applications have not been tested. Optimal dilutions/concentrations should be determined by the end user

Background

This gene encodes a protein which is phosphorylated by insulin receptor tyrosine kinase. Mutations in this gene are associated with type II diabetes and susceptibility to insulin resistance.

Research Use

For research use only, not for use in diagnostic procedure

Legend

Applications: WB-Western Blot; IHC-Immunohistochemistry; IF-Immunofluorescence; IP-Immunoprecipitation; FC-Flow cytometry; ChIP-Chromatin Immunoprecipitation

Reactivity: H-Human; R-Rat; M-Mouse; Mk-Monkey; Dg-Dog; Ch-Chicken; Hm-Hamster; Rb-Rabbit; Sh- Sheep; Pg-Pig; Z- Zebrafish; X-Xenopus; C-Cow,Fs- fish.

Please contact Origin Diagnostics and Research for further assistance

www.originlab.in

info@originlab.in

+91-7736237778